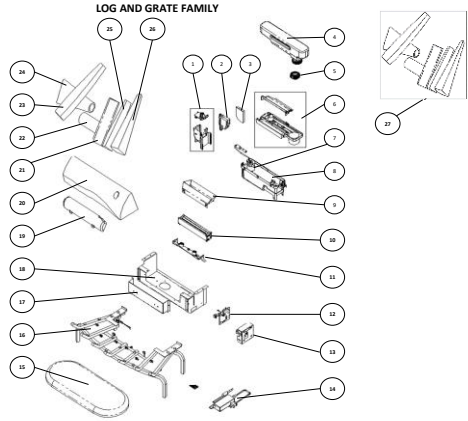


SM 011\_Log and Grate Optimyst Issue Fixes\_Rev1

Diagram for Illustration Purposes Only  
LOG AND GRATE FAMILY



Spare not on system and No cost  
 Spare on System, no cost available

Diagram Number #	Spare Part PN	Description	Name					DNA LOG & Grate F1211
			SVT20 UK SILVERTON LOG&GRATE	SVT20R THWIG SILVERTON LOG&GRATE OPTI	SVT20 EU SILVERTON OPTIMYST (2017 New Design)	SVT20 EU SILVERTON DIMPLEX OPTIMYST	SVT20 AUS SILVERTON DIMPLEX OPTI	
Model	48851	204140	204154	204160	204166	88420	DNA LOG	
Partcode	48851	204140	204154	204160	204166	204172	1000079	
NOTE:								
1	7511084	HOLDING TOP C/W TAB & HOLDING	X	X	X	X	X	96009401000RP
2	7511029	Support Pin	X	X	X	X	X	13003001000RP
3	7511029	FILTERS	X	X	X	X	X	86003001000RP
4	SP04/2286/0	BOTTLE LID ASSY	X	X	X	X	X	04414401000RP
5	SP03/2243/1	OPTIMYST BOTTLE LID	X	X	X	X	X	04414403000RP
6	SP04/1947/0	Nozzle Assy, Mist Plate Assy and PCB Set	X	X	X	X	X	96009301000RP
7	7511088	KEY TRANSLOCATOR C/W FERRITE	X	X	X	X	X	24000401000RP
8	7511098	PUMP	X	X	X	X	X	04413001000RP
9	7511096	MIST PLATE LIGHT BAFFLE MM2	X	X	X	X	X	10214601000RP
10	7511093	KEY ELEMENT	X	X	X	X	X	96009301000RP
11	300001301	LED ASSEMBLY C/W BRACKETS	X	X	X	X	X	30011002000RP
12	300001114	MAIN PCB C/W STAND OFFS	X	X	X	X	X	30011101000RP
13	7511095	PCB HOLDING C/W LABELS	X	X	X	X	X	21002201000RP
14	D113025	Power Supply Unit	7511096	D113025	D113025	D113025	D113025	D113025
15	7511097	FAHER BUSH	X	X	X	X	X	04415001000RP
16	7511098	GRATE F1211	X	X	X	X	X	80081401100RP
17	7511099	FRONT PANEL	X	X	X	X	X	Not Used
18	7511100	REAR PANEL	X	X	X	X	X	Not Used
19	7511101	FRONT BASE LOG	X	X	X	X	X	04411401000RP
20	7511102	REAR BASE LOG	X	X	X	X	X	04401401000RP
21	7511103	LOG NO. 4	X	X	X	X	X	Not Used
22	SP04/2291/0	LOG NO. 3	X	X	X	X	X	Not Used
23	7511105	LOG NO. 2	X	X	X	X	X	Not Used
24	SP04/2289/0	LOG NO. 1	X	X	X	X	X	Not Used
25	SP04/2293/0	LOG NO. 5	X	X	X	X	X	Not Used
26	7511108	LOG NO. 6	X	X	X	X	X	Not Used
Not Shown	SP04/1946/0	Nozzle Assy and Mist Plate Assy	X	X	X	X	X	Not Used
Not Shown	7511109	Remote Control Dimmer	X	X	D113027	X	X	D113026
27	7511132	Loose set of Logs 1 to 6	X	X	X	X	X	86005101000RP

Diagram Number #	Spare Part PN	Description	Name			
			SVT20 UK SILVERTON LOG&GRATE	SVT20R THWIG SILVERTON LOG&GRATE OPTI	SVT20 EU SILVERTON OPTIMYST (2017 New Design)	SVT20 EU SILVERTON DIMPLEX OPTIMYST
Model	48851	204140	204154	204160	204166	
Partcode	48851	204140	204154	204160	204166	
NOTE:						
1	7511084	HOLDING TOP C/W TAB & HOLDING	5.62923	5.62923	5.62923	5.62923
2	7511029	Support Pin	4.26797	4.26797	4.26797	4.26797
3	7511029	FILTERS	0.56559	0.56559	0.56559	0.56559
4	751102	BOTTLE LID ASSY	4.27631	4.27631	4.27631	4.27631
5	7512001	OPTIMYST BOTTLE LID	0	0	0	0
6	SP04/1947/0	Nozzle Assy, Mist Plate Assy and PCB Set	0	0	0	0
7	7511088	KEY TRANSLOCATOR C/W FERRITE	7.76845	7.76845	7.76845	7.76845
8	7511098	PUMP	2.62426	2.62426	2.62426	2.62426
9	7511096	MIST PLATE LIGHT BAFFLE MM2	3.98456	3.98456	3.98456	3.98456
10	7511093	KEY ELEMENT	3.96014	3.96014	3.96014	3.96014
11	751109	LED ASSEMBLY C/W BRACKETS	0	0	0	0
12	30011101000RP	MAIN PCB C/W STAND OFFS	0	0	0	0
13	7511095	PCB HOLDING C/W LABELS	2.21308	2.21308	2.21308	2.21308
14	D113025	Power Supply Unit	10.1888	10.1888	10.1888	10.1888
15	7511097	FAHER BUSH	13.7888	13.7888	13.7888	13.7888
16	7511098	GRATE F1211	20.6097	20.6097	20.6097	20.6097
17	7511099	FRONT PANEL	2.76099	2.76099	2.76099	2.76099
18	7511100	REAR PANEL	4.57932	4.57932	4.57932	4.57932
19	7511101	FRONT BASE LOG	3.28397	3.28397	3.28397	3.28397
20	7511102	REAR BASE LOG	11.14653	11.14653	11.14653	11.14653
21	7511103	LOG NO. 4	4.9303	4.9303	4.9303	4.9303
22	7511104	LOG NO. 3	39.5986	39.5986	39.5986	39.5986
23	7511105	LOG NO. 2	5.49679	5.49679	5.49679	5.49679
24	7511106	LOG NO. 1	39.5986	39.5986	39.5986	39.5986
25	7511107	LOG NO. 5	39.5986	39.5986	39.5986	39.5986
26	7511108	LOG NO. 6	4.58184	4.58184	4.58184	4.58184
Not Shown	SP04/1946/0	Nozzle Assy and Mist Plate Assy	0	0	0	0
Not Shown	7511109	Remote Control Dimmer	2.60051	2.60051	2.60051	2.60051
27	7511131	Loose set of Logs 1 to 6	20.43116	20.43116	20.43116	20.43116

Faber